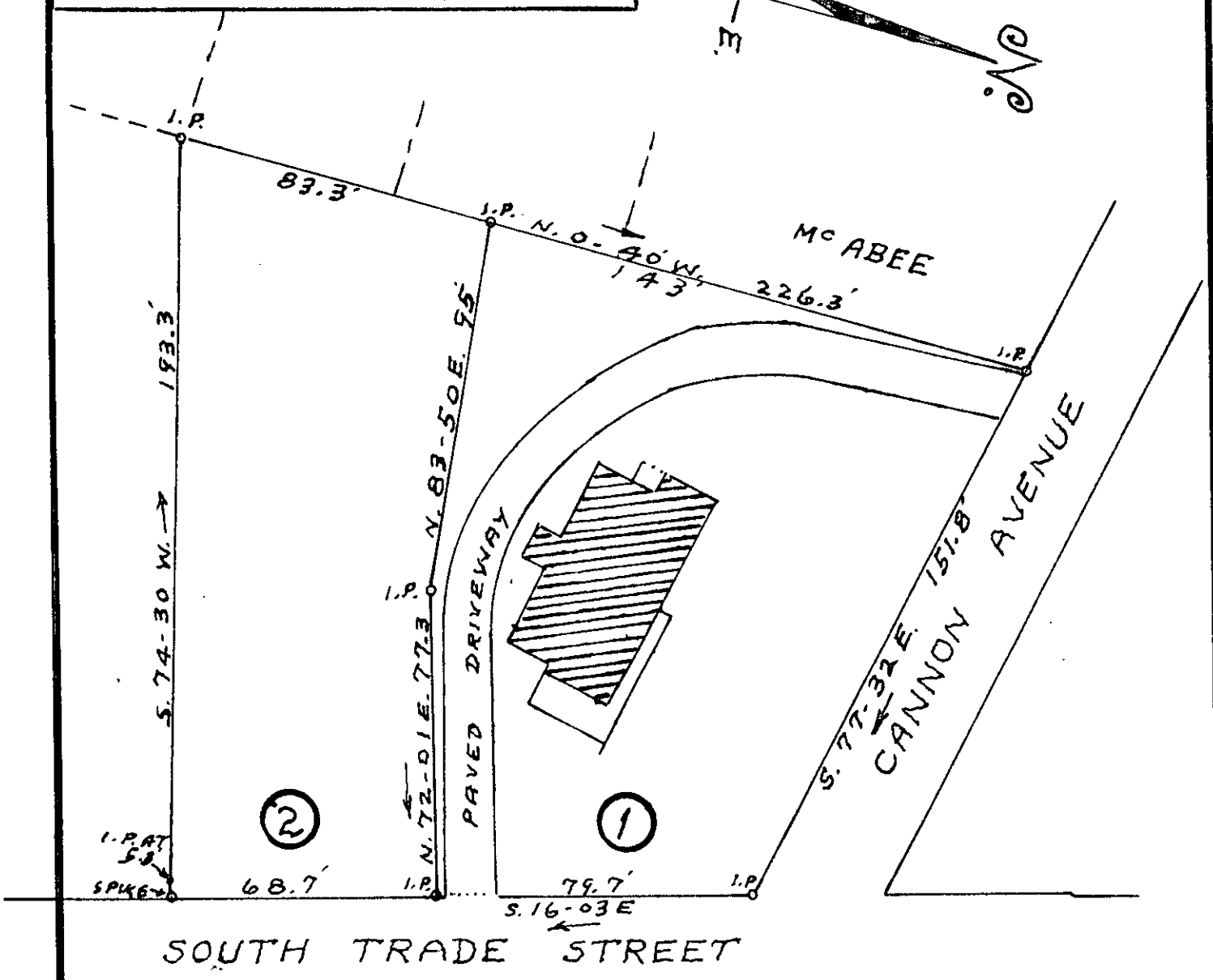
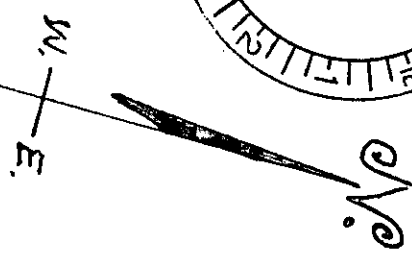
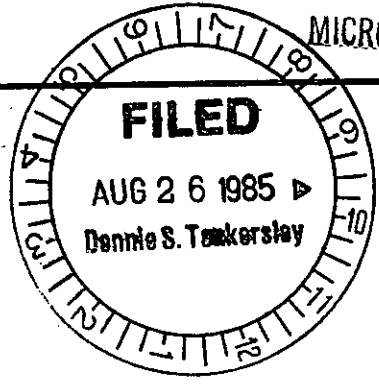


THIS PLAT IS NOT A SUBDIVISION AS DEFINED BY THE GREENVILLE COUNTY SUBDIVISION REGULATIONS.

8/26/1985

*John H. Wings*  
Chairman, Secretary, or Director of Planning.  
Greenville County Planning Commission



AUG 26 1985

PROPERTY OF 11-W-12  
6642

**JULIA · EDNA · MANESS**

LOCATED IN GREER

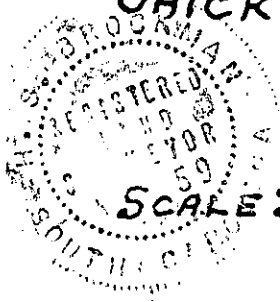
CHICK SPRINGS · TOWNSHIP · GREENVILLE · COUNTY

**SOUTH CAROLINA**

SCALE: 1" = 40 FEET

JAN · 31 · 1964

SURVEYED JAN · 30 · 1964



H. S. BROCKMAN, REG' SURVEYOR  
GREER, S.C. NO. 959